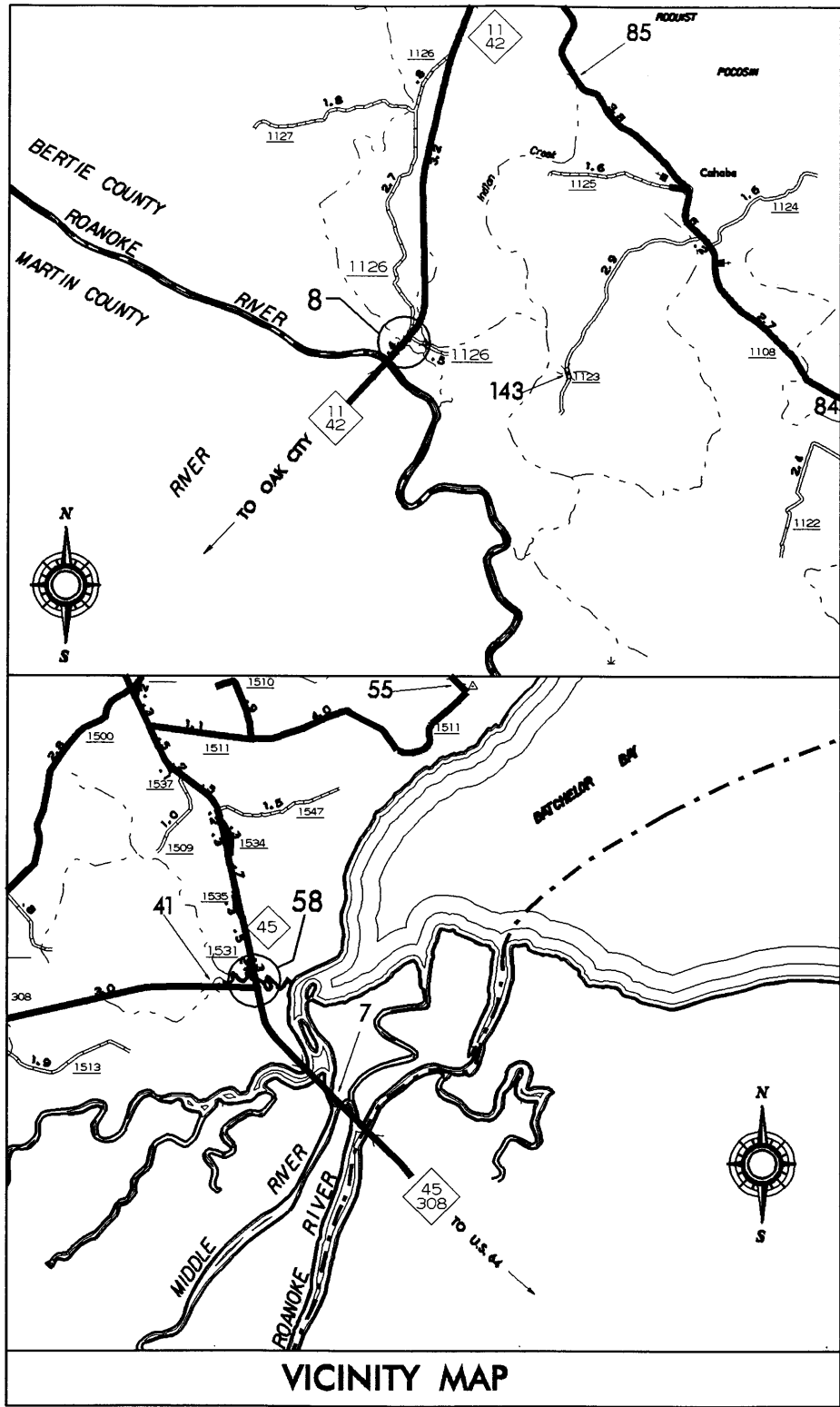


B-4700AK

CONTRACT # D000034



STATE OF NORTH CAROLINA
DIVISION OF HIGHWAYS

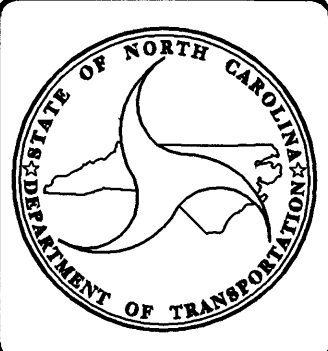
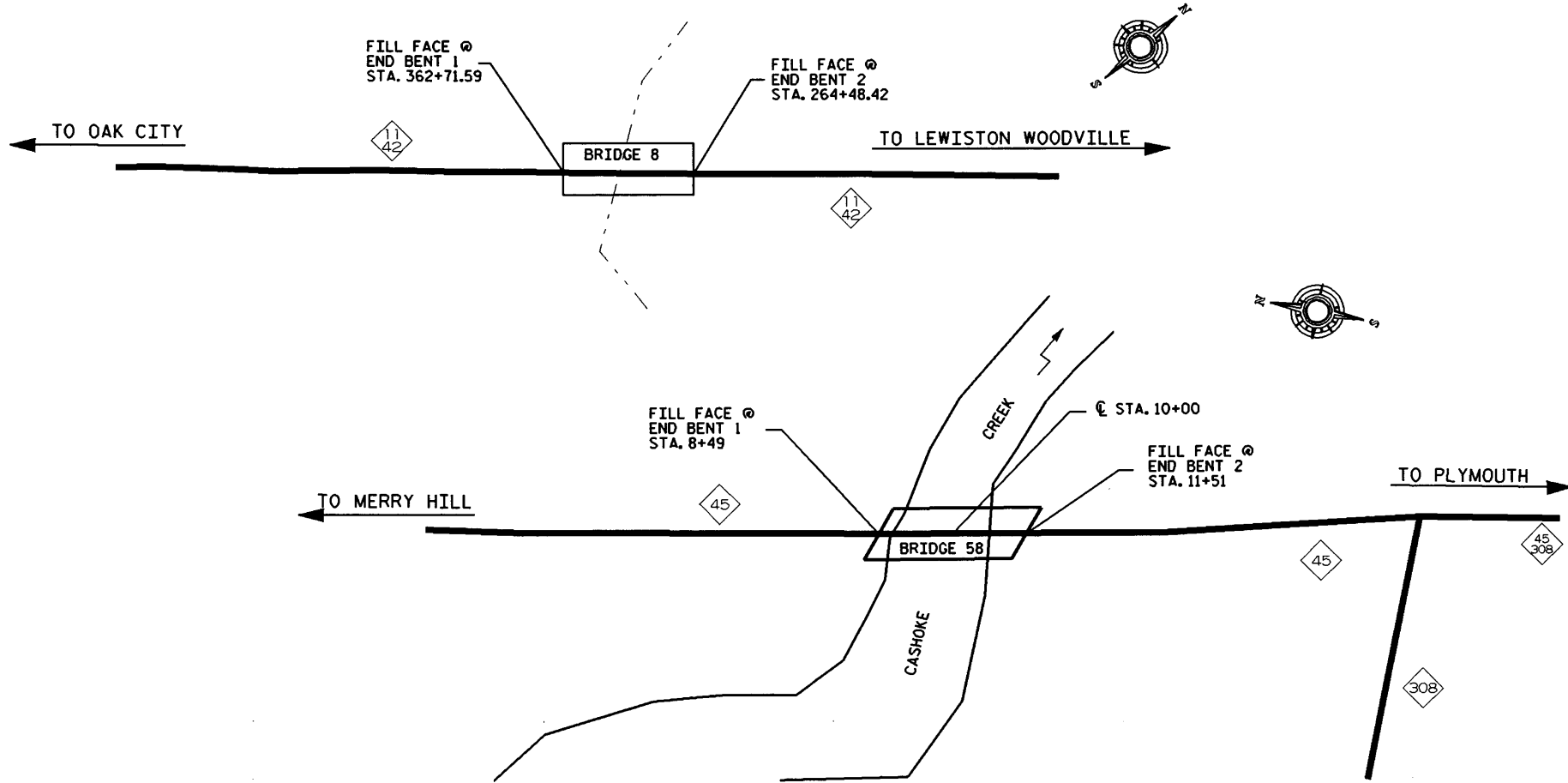
BERTIE COUNTY

**LOCATION: BRIDGE #58, ON NC 45, OVER CASHOKE CREEK
BRIDGE #8, ON NC 11 & NC 42 OVER ROANOKE RIVER OVERFLOW**

TYPE OF WORK: BRIDGE DECK REHABILITATION WITH LATEX MODIFIED CONCRETE, PAVEMENT MARKING

STATE	STATE PROJECT REFERENCE NO.	SHEET NO.	TOTAL SHEETS
N.C.	36727.1.1	1	
STATE PROJ. NO.	F.A. PROJ. NO.	DESCRIPTION	
36727.1.1	BRNHS-0005 (370)	P.E.	
36727.3.35	BRNHS-0005 (370)	CONST	

INDEX OF SHEETS	
1	TITLE SHEET
S1 - S6	STRUCTURE PLANS
TCP1 - TCP5	TRAFFIC CONTROL PLANS



DESIGN DATA

BRIDGE BERTIE 8	ADT 2007 = 4300
BRIDGE BERTIE 58	ADT 2008 = 2500

PROJECT LENGTH

LENGTH STRUCTURE	BRIDGE 8 =	.034 MILE
LENGTH STRUCTURE	BRIDGE 58 =	.057 MILE
LENGTH STRUCTURE	PROJECT =	.091 MILE

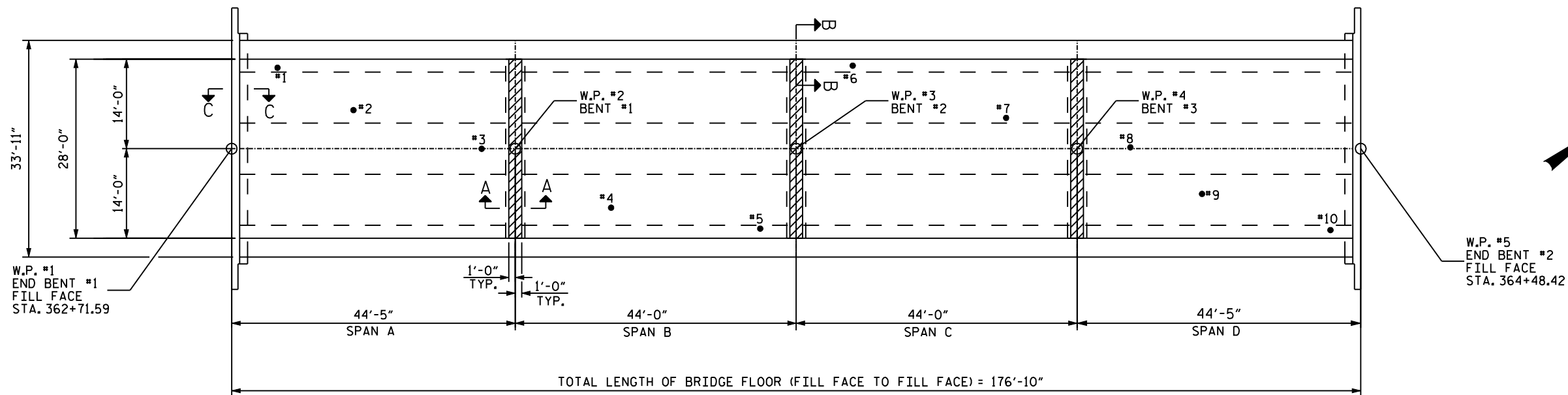
Prepared in the Office of:
DIVISION OF BRIDGE MANAGEMENT
2006 STANDARD SPECIFICATIONS

LETTING DATE: MARCH 18, 2010	DAN HOLDERMAN, PE PROJECT ENGINEER
---------------------------------	---------------------------------------



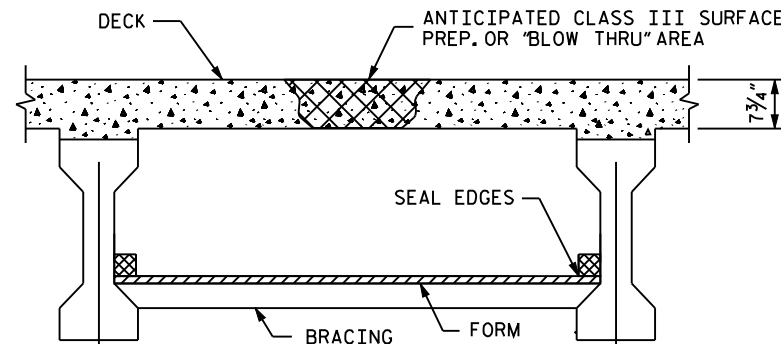
← TO OAK CITY

TO LEWISTON WOODVILLE →



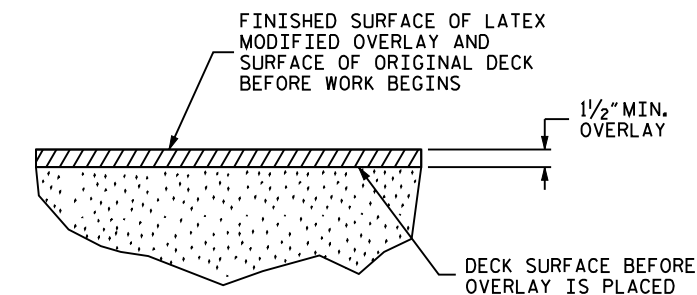
PLAN VIEW

- APPROX. AREA: CLASS II REPAIR
- APPROX. TEST BORING LOCATION



TYP. "BLOW THRU" CONTAINMENT AND FORMWORK

A METHOD TO CAPTURE WATER AND DEBRIS FROM BLOW THRU DURING HYDRO-DEMOLITION SHALL BE INSTALLED IN AREAS INDICATED AS CLASS III SURFACE PREPARATION.
 SUBMIT DETAILS OF PROPOSED FORMWORK FOR APPROVAL PRIOR TO BEGINNING WORK.
 COST FOR INSTALLING AND REMOVING FORMWORK SHALL BE INCIDENTAL TO THE PRICE PER SQ. YARD OF HYDRO-DEMOLITION.



DETAIL FOR LATEX MODIFIED CONCRETE OVERLAY

NOTES

FOR OVERLAY OF BRIDGE WITH LATEX MODIFIED CONCRETE- VERY EARLY STRENGTH, SEE SPECIAL PROVISIONS.
 SEE SPECIAL PROVISIONS FOR SURFACE PREPARATION.
 FOR HYDRO-DEMOLITION, SEE SPECIAL PROVISIONS.
 FOR UNDER DECK CONTAINMENT SEE SPECIAL PROVISIONS.
 THE CONTRACTOR MUST COLLECT, TREAT AND DISPOSE OF RUN -OFF WATER FROM THE HYDRO- DEMOLITION PROCESS, SEE SPECIAL PROVISIONS.
 BRIDGE DECK DRIANS SHALL BE PLUGGED DURING HYDRODEMOLITION PROCEES.
 THE BOUNDARIES OF AREAS IDENTIFIED FOR CLASS III SURFACE PREPARATION ARE APPROXIMATE.
 FOR EVAZOTE JOINT SEALS, SEE SPECIAL PROVISIONS.
 FOR CLASS AA CONCRETE SEE SPECIAL PROVISIONS.

PROJECT NO. B-4700AK
 COUNTY: BERTIE
 DECK REHAB BRIDGE NO. 8

TOTAL BILL OF MATERIAL

** SCARIFYING BRIDGE DECK	* CLASS I SURFACE PREPARATION	* CLASS II SURFACE PREPARATION	* CLASS III SURFACE PREPARATION	HYDRO-DEMOLITION	LATEX MODIFIED CONCRETE VERY EARLY STRENGTH	PLACING & FINISHING LATEX MODIFIED CONCRETE VERY EARLY STRENGTH	EVAZOTE JOINT SEALS	GROOVING BRIDGE FLOOR	ASPHALT CONCRETE SURFACE COURSE TYPE SF 9.5A
SO.YDS.	SO.YDS.	SO.YDS.	SO.YDS.	SO.YDS.	C.Y.	SO.YDS.	LUMP SUM	SO. FT.	TONS
861	550	19	0	569	30	569	LUMP SUM	4,774	34

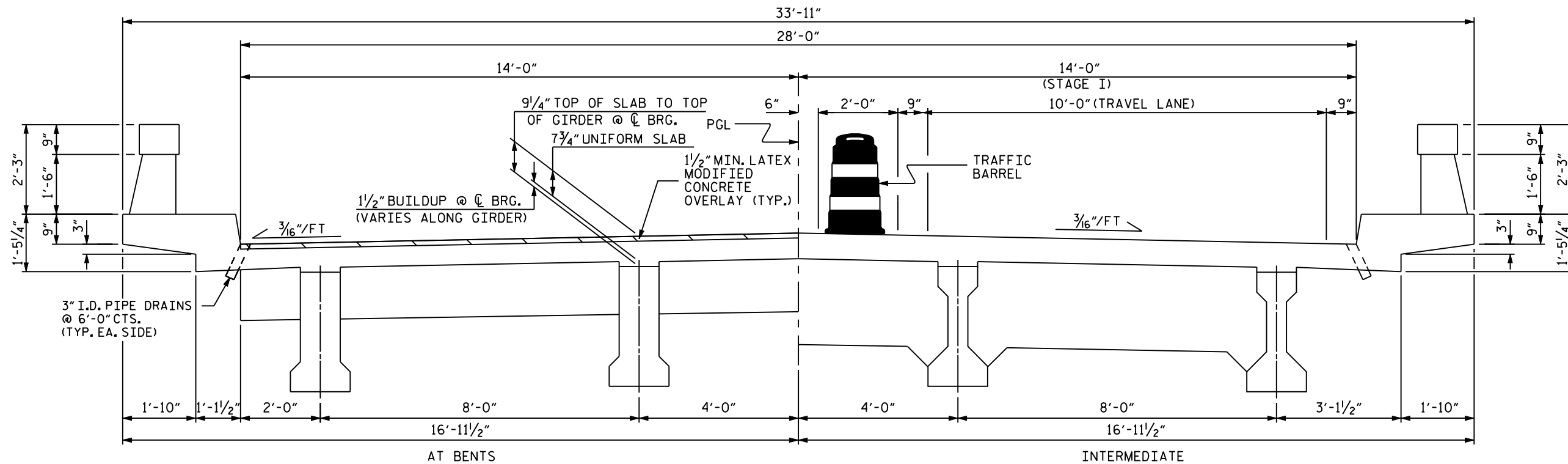
* QUANTITY SHOWN IS FOR INFORMATION ONLY. ** INCLUDES APPROACH MILLING.

STATE OF NORTH CAROLINA
 DEPARTMENT OF TRANSPORTATION
 RALEIGH
 PLAN VIEW OF BRIDGE
 #8 ON NC 11 OVER
 ROANOKE RIVER OVERFLOW

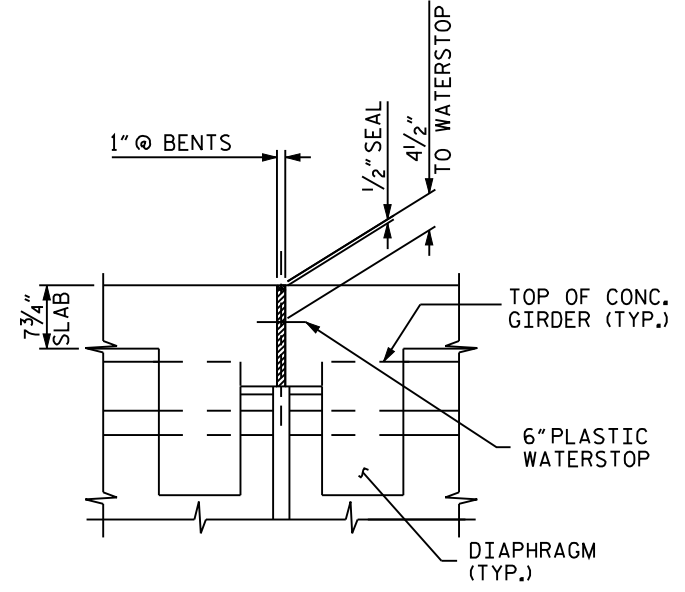
REVISIONS						SHEET NO. S-1
NO.	BY	DATE	NO.	BY	DATE	
1			3			TOTAL SHEETS
2			4			

DRAWN BY : LMW DATE : 01/10
 CHECKED BY : AGA DATE : 01/10

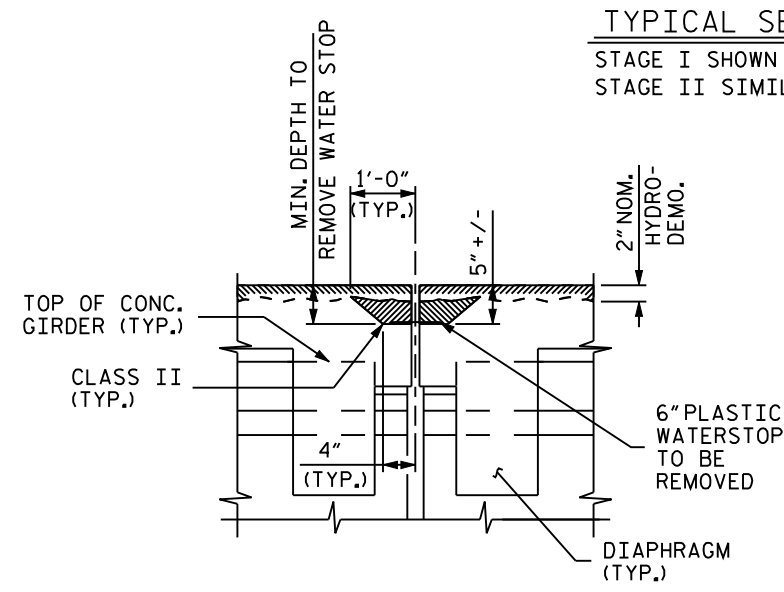
*****SYTIME***** *****USERNAME*****



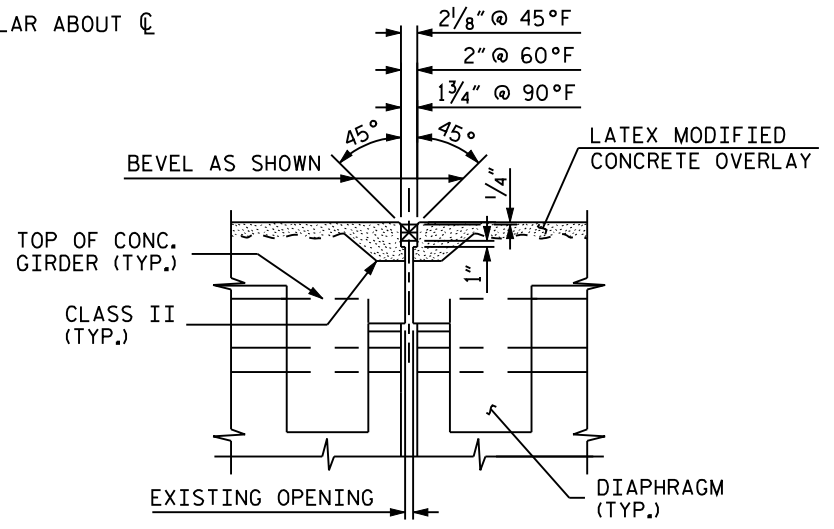
TYPICAL SECTION
STAGE I SHOWN
STAGE II SIMILAR ABOUT C



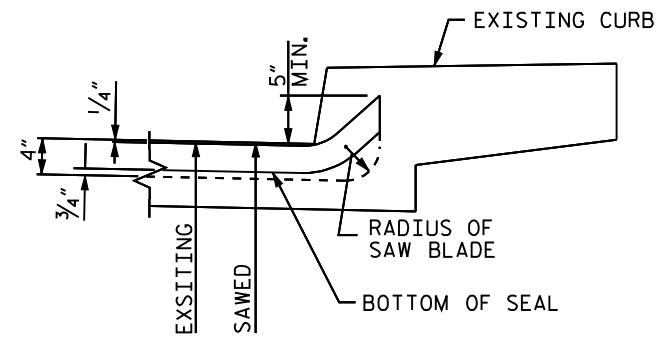
SECTION A-A
(EXISTING JOINT)



SECTION A-A
(MINIMUM EXISTING JOINT DEMOLITION)

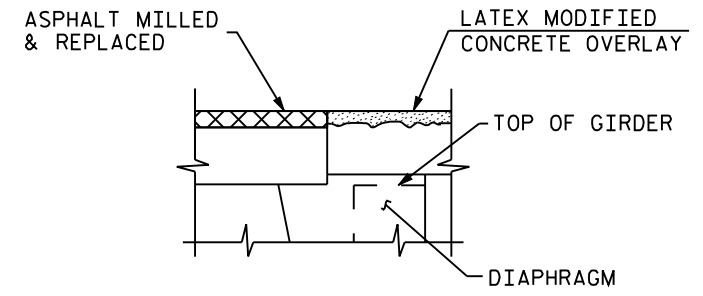


SECTION A-A
(PROPOSED EVAZOTE JOINT SEAL EXPANSION)

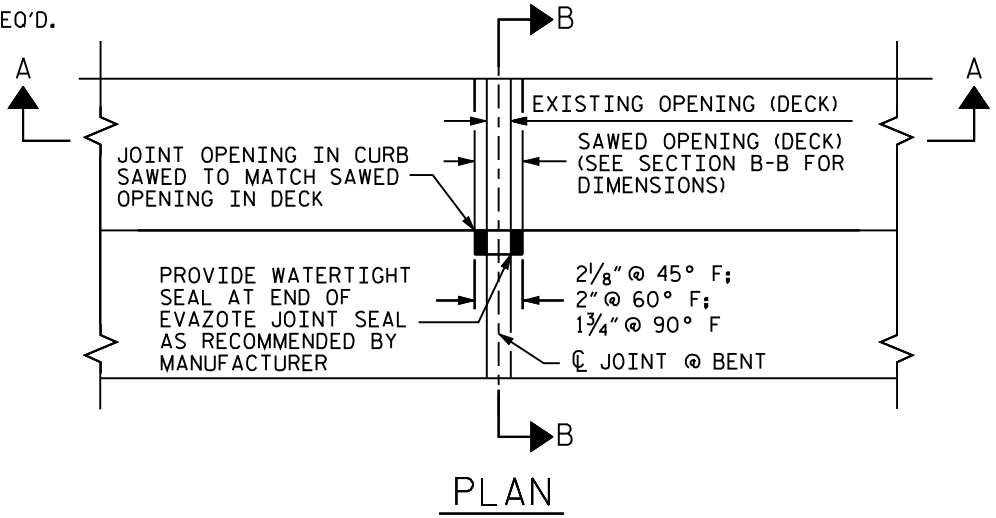


SECTION B-B

NOTE: RETAIN ALL EXISTING REINF. STEEL. CLEAN AND REPAIR AS REQ'D.



SECTION C-C



PLAN

PROJECT NO. B-4700AK
COUNTY: BERTIE
DECK REHAB BRIDGE NO. 8

STATE OF NORTH CAROLINA
DEPARTMENT OF TRANSPORTATION
RALEIGH

TYPICAL SECTION
&
JOINT DETAILS

REVISIONS					
NO.	BY	DATE	NO.	BY	DATE
1			3		
2			4		

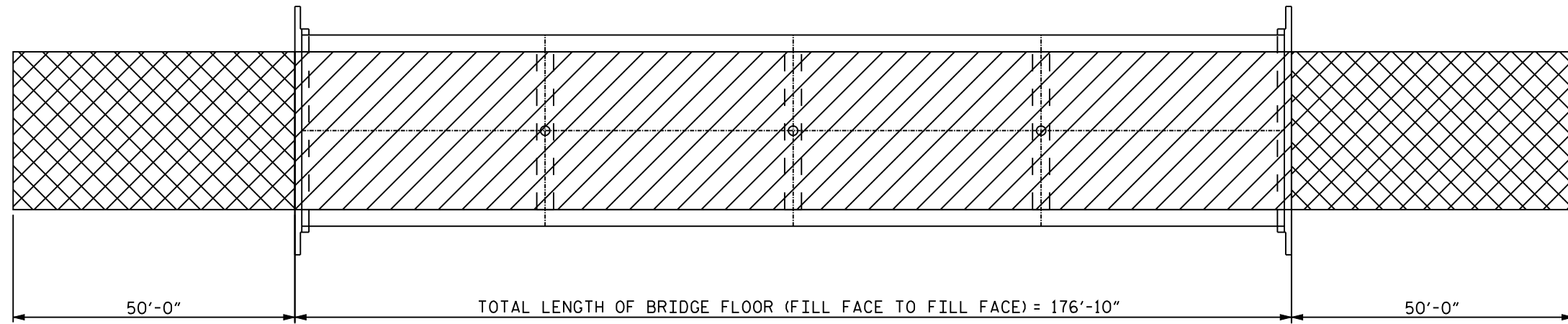
SHRIT NO. S-2
TOTAL SHEETS

DRAWN BY : LMW DATE : 01/10
CHECKED BY : AGA DATE : 01/10

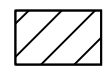
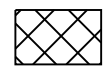
*****SYSTEM***** *****USERNAME*****

← TO OAK CITY

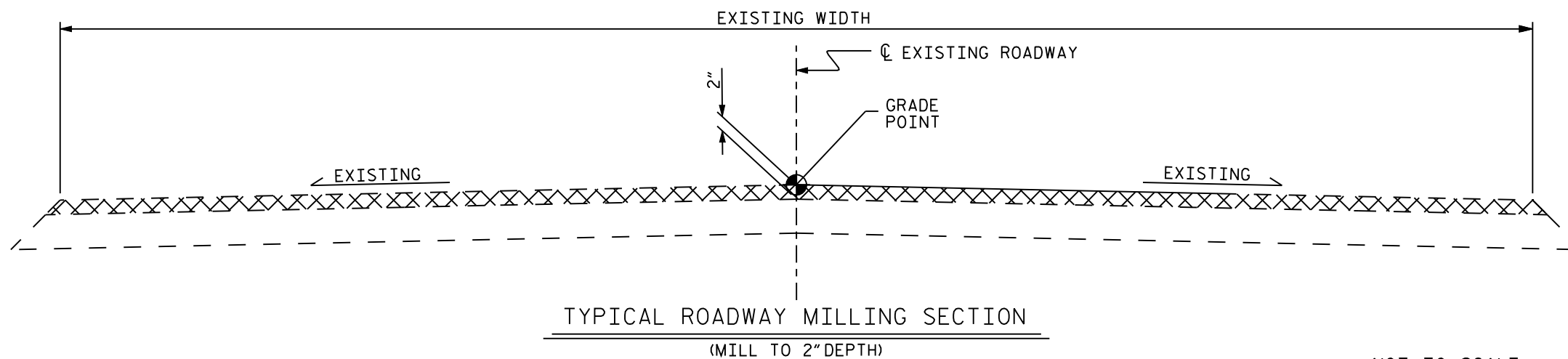
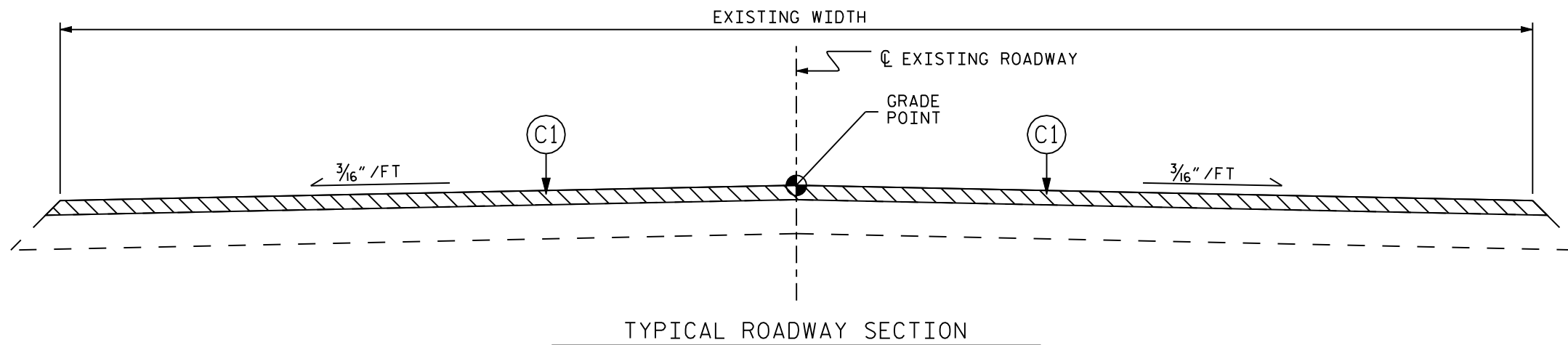
→ TO LEWISTON WOODVILLE



PLAN

-  DECK SCARICATION AND HYDRODEMOLITION
-  ASPHALT MILLING

C1 PROPOSED VARIABLE DEPTH ASPHALT CONCRETE SURFACE COURSE, TYPE SF 9.5A AT AN AVERAGE RATE OF 110 LBS. PER SQ. YD. PER 1" DEPTH. TO BE PLACED IN LAYERS NOT LESS THAN 1" IN DEPTH OR GREATER THAN 1/2" IN DEPTH.



PROJECT NO. B-4700AK
 COUNTY: BERTIE
 DECK REHAB BRIDGE NO. 8

STATE OF NORTH CAROLINA
 DEPARTMENT OF TRANSPORTATION
 RALEIGH
 PLAN VIEW OF BRIDGE
 #8 ON NC 11 OVER
 ROANOKE RIVER OVERFLOW

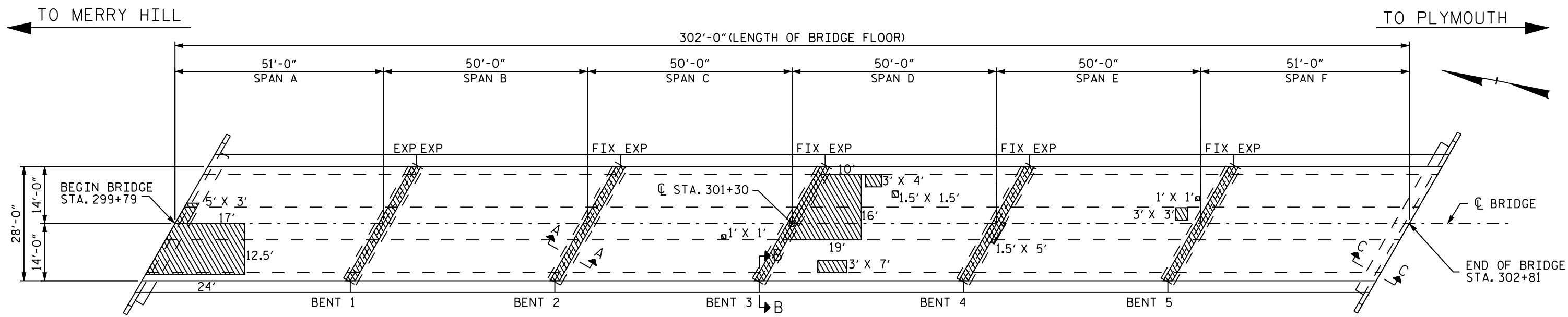
REVISIONS					
NO.	BY	DATE	NO.	BY	DATE
1			3		
2			4		

SHEET NO.
S-3
TOTAL SHEETS

NOT TO SCALE

DRAWN BY : LMW DATE : 01/10
 CHECKED BY : AGA DATE : 01/10

*****SYSTIME***** *****USERNAME*****

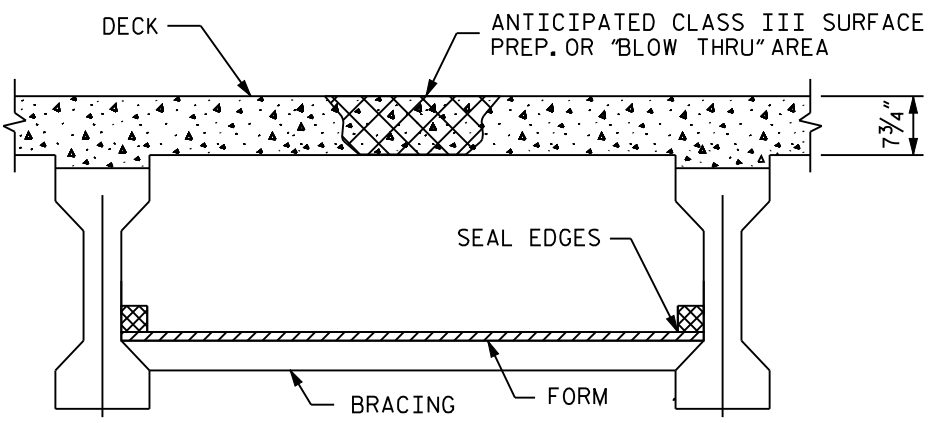


PLAN VIEW

- APPROX. AREA: CLASS II REPAIR
- APPROX. TEST BORING LOCATION

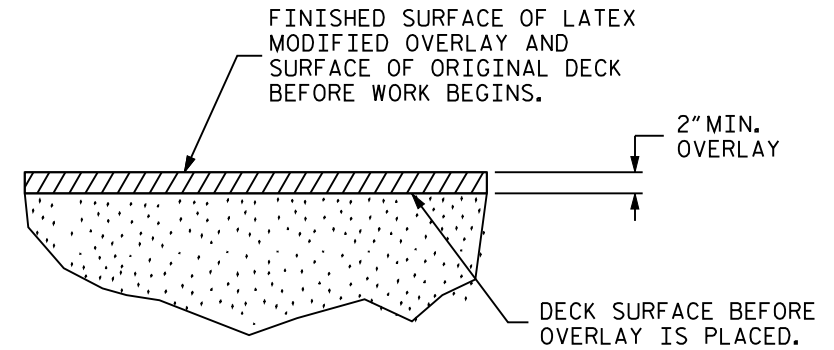
NOTES

FOR OVERLAY OF BRIDGE WITH LATEX MODIFIED CONCRETE-VERY EARLY STRENGTH, SEE SPECIAL PROVISIONS.
 SEE SPECIAL PROVISIONS FOR SURFACE PREPARATION.
 FOR HYDRO-DEMOLITION, SEE SPECIAL PROVISIONS .
 FOR UNDER DECK CONTAINMENT SEE SPECIAL PROVISIONS.
 THE CONTRACTOR MUST COLLECT, TREAT AND DISPOSE OF RUN -OFF WATER FROM THE HYDRO- DEMOLITION PROCESS, SEE SPECIAL PROVISIONS.
 BRIDGE DECK DRIANS SHALL BE PLUGGED DURING HYDRODEMOLITION PROCEES.
 THE BOUNDARIES OF AREAS IDENTIFIED FOR CLASS III SURFACE PREPARATION ARE APPROXIMATE.
 FOR EVAZOTE JOINT SEALS, SEE SPECIAL PROVISIONS.
 BRIDGE DECK DRIANS SHALL BE PLUGGED DURING HYDRODEMOLITION PROCESS.



TYP. "BLOW THRU" CONTAINMENT AND FORMWORK

A METHOD TO CAPTURE WATER AND DEBRIS FROM BLOW THRU DURING HYDRO-DEMOLITION SHALL BE INSTALLED IN AREAS INDICATED AS CLASS III SURFACE PREPARATION.
 SUBMIT DETAILS OF PROPOSED FORMWORK FOR APPROVAL PRIOR TO BEGINNING WORK.
 COST FOR INSTALLING AND REMOVING FORMWORK SHALL BE INCIDENTAL TO THE PRICE PER SQ. YARD OF HYDRO-DEMOLITION.



DETAIL FOR LATEX MODIFIED CONCRETE OVERLAY

TOTAL BILL OF MATERIAL								
** SCARIFYING BRIDGE DECK	* CLASS I SURFACE PREPARATION	* CLASS II SURFACE PREPARATION	* CLASS III SURFACE PREPARATION	HYDRO-DEMOLITION OF BRIDGE DECK	LATEX MODIFIED CONCRETE	PLACING & FINISHING LATEX MODIFIED CONCRETE	GROOVING BRIDGE FLOOR	ASPHALT CONCRETE SURFACE COURSE TYPE SF 9.5A
SO.YDS.	SO.YDS.	SO.YDS.	SO.YDS.	SO.YDS.	C.Y.	SO.YDS.	SQ. FT.	TONS
1145	842	98	0	940	59	940	8456	23

* QUANTITY SHOWN IS FOR INFORMATION ONLY. ** INCLUDES APPROACH MILLING.

PROJECT NO. B-4700AK
 COUNTY: BERTIE
 DECK REHAB BRIDGE NO. 58

STATE OF NORTH CAROLINA
DEPARTMENT OF TRANSPORTATION
 RALEIGH

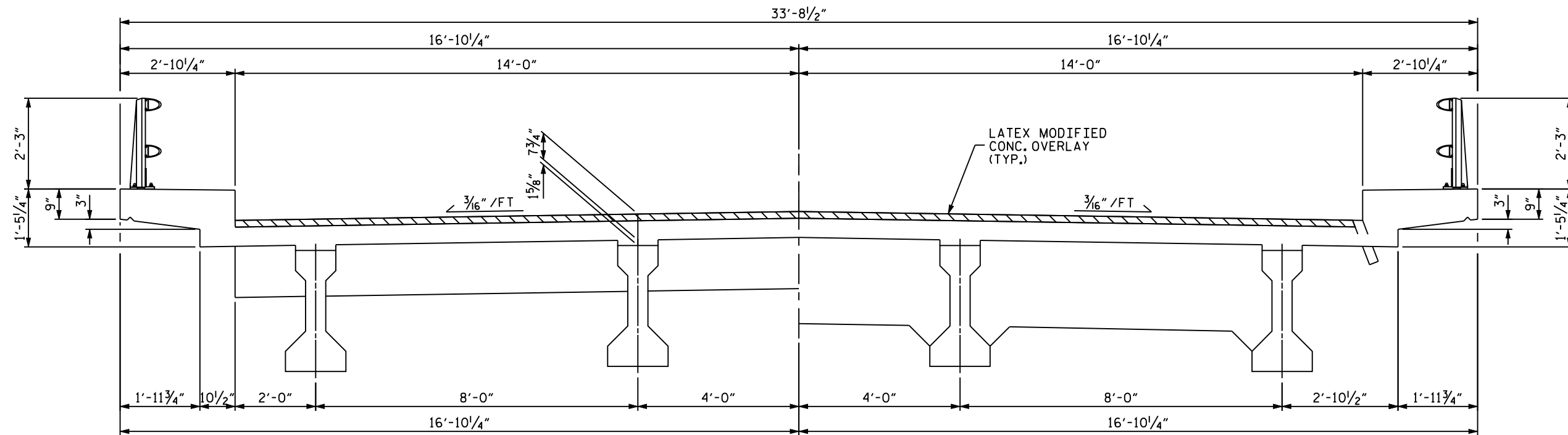
PLAN VIEW OF BRIDGE
 #58 ON NC 45 OVER
 CASHOKE CREEK

REVISIONS					
NO.	BY	DATE	NO.	BY	DATE
1			3		
2			4		

SHEET NO. **S-4**
 TOTAL SHEETS

DRAWN BY : CLB DATE : 11/09
 CHECKED BY : AGA DATE : 11/09

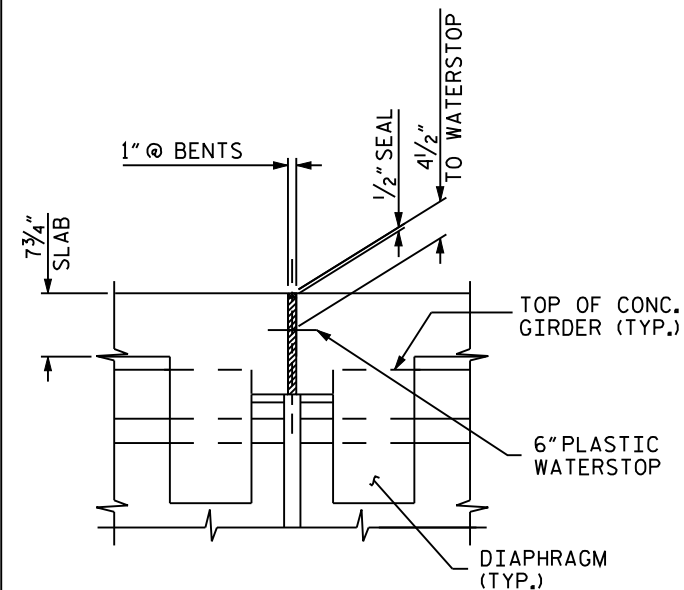
*****SYSTEMTIME***** *****USERNAME*****



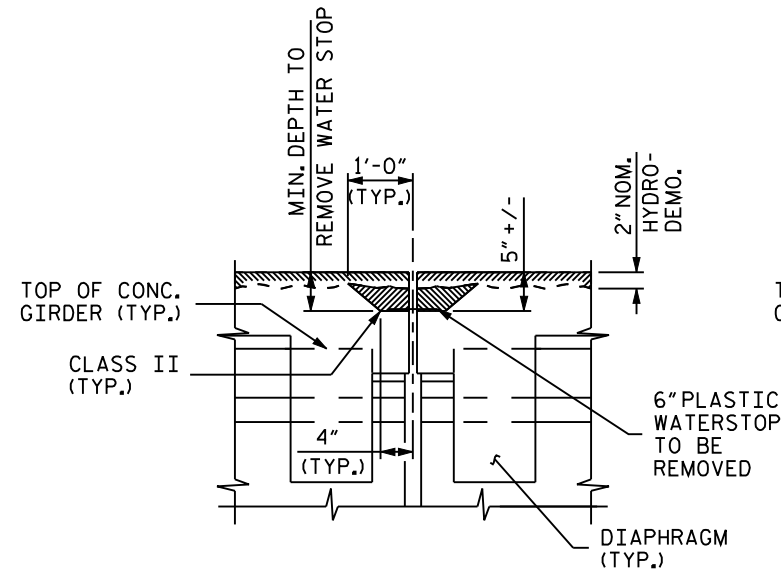
TYPICAL SECTION

NOTES

FOR EVAZOTE JOINT SEAL, SEE SPECIAL PROVISIONS.
 THE INSTALLED EVAZOTE JOINT SEALS SHALL BE WATERTIGHT.
 NOMINAL UNCOMPRESSED SEAL WIDTH OF EVAZOTE JOINT SEAL SHALL BE 2 1/2" AT BENTS.
 THE CONTRACTOR WILL NOT BE PERMITTED TO FORM THE JOINT FOR THE EVAZOTE JOINT SEAL IN LIEU OF SAWING THE JOINT.

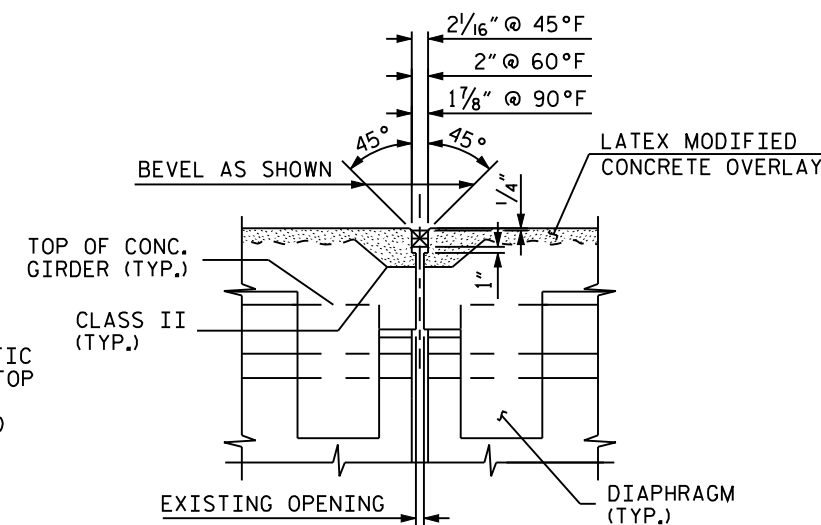


SECTION A-A
(EXISTING JOINT)

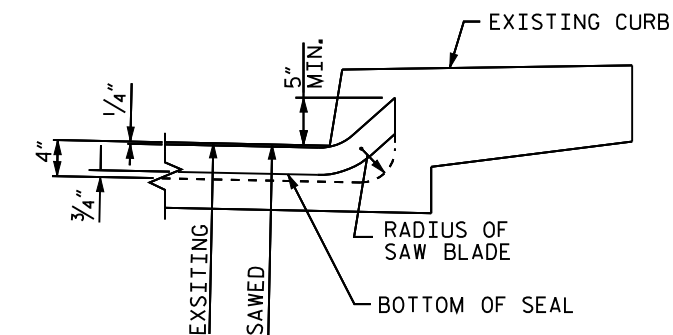


SECTION A-A
(MINIMUM EXISTING JOINT DEMOLITION)

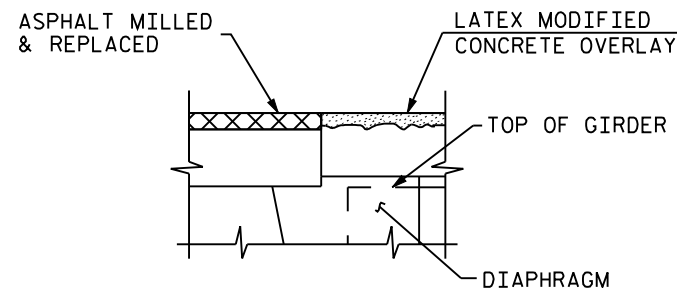
NOTE: RETAIN ALL EXISTING REINF. STEEL. CLEAN AND REPAIR AS REQ'D.



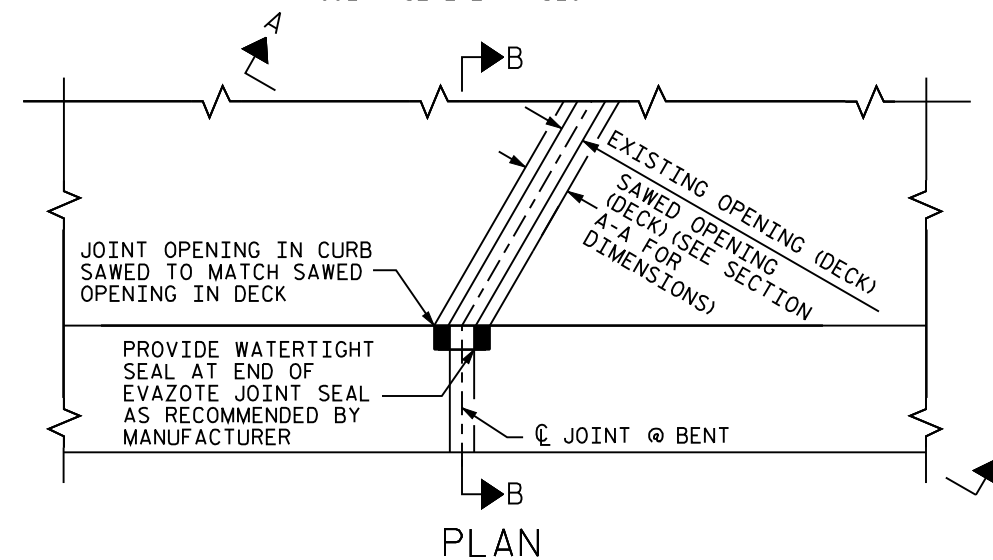
SECTION A-A
(PROPOSED EVAZOTE JOINT SEAL EXPANSION)



SECTION B-B



SECTION C-C



PLAN

PROJECT NO. B-4700AK
 COUNTY: BERTIE
 DECK REHAB BRIDGE NO. 58

STATE OF NORTH CAROLINA
 DEPARTMENT OF TRANSPORTATION
 RALEIGH

TYPICAL SECTION
 &
 JOINT DETAILS

REVISIONS					
NO.	BY	DATE	NO.	BY	DATE
1			3		
2			4		

SHEET NO. S-5
 TOTAL SHEETS

DRAWN BY : CLB DATE : 01/10
 CHECKED BY : AGA DATE : 01/10

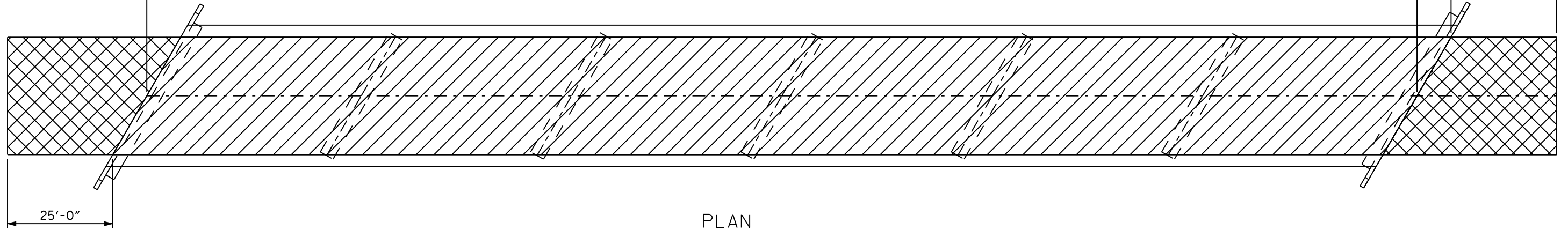
*****SYSTEM***** *****USERNAME*****

TO MERRY HILL

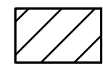
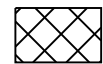
TO PLYMOUTH

302'-0" (LENGTH OF BRIDGE FLOOR)

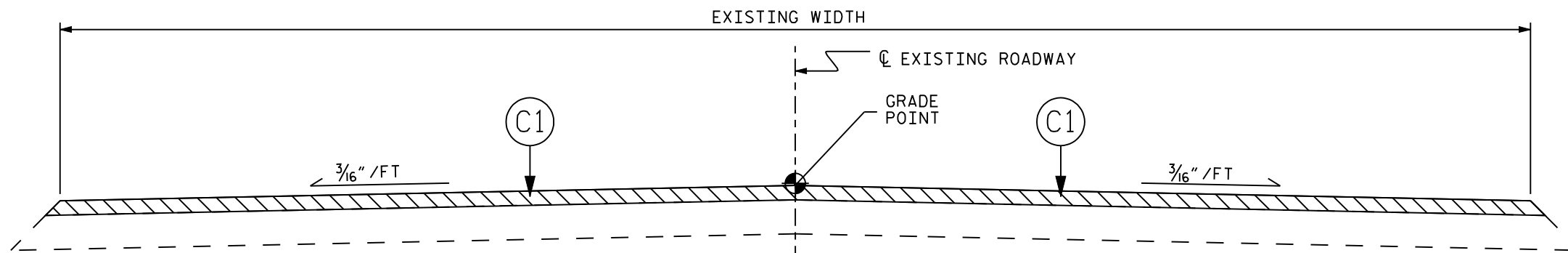
25'-0"



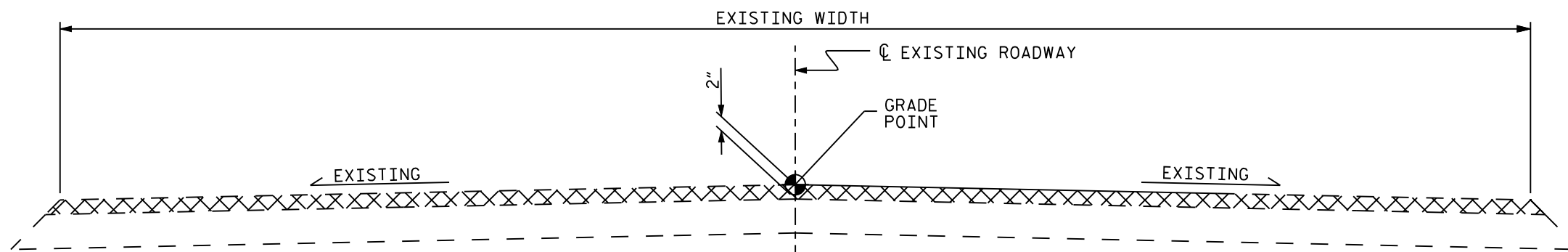
PLAN

-  DECK SCARICATION AND HYDRODEMOLITION
-  ASPHALT MILLING

C1 PROPOSED VARIABLE DEPTH ASPHALT CONCRETE SURFACE COURSE, TYPE SF 9.5A AT AN AVERAGE RATE OF 110 LBS. PER SQ. YD. PER 1" DEPTH. TO BE PLACED IN LAYERS NOT LESS THAN 1" IN DEPTH OR GREATER THAN 1 1/2" IN DEPTH.



TYPICAL ROADWAY SECTION



TYPICAL ROADWAY MILLING SECTION
(MILL TO 2" DEPTH)

PROJECT NO. B-4700AK
 COUNTY: BERTIE
 DECK REHAB BRIDGE NO. 58

STATE OF NORTH CAROLINA
 DEPARTMENT OF TRANSPORTATION
 RALEIGH
 PLAN VIEW OF BRIDGE
 #58 ON NC 45 OVER
 CASHOKE CREEK

REVISIONS						SHEET NO. S-6
NO.	BY	DATE	NO.	BY	DATE	
1			3			TOTAL SHEETS
2			4			

NOT TO SCALE

DRAWN BY : CLB DATE : 11/09
 CHECKED BY : AGA DATE : 11/09

*****SYSTIME***** *****USERNAME*****

STATE OF NORTH CAROLINA
DIVISION OF HIGHWAYS

STATE PROJECT REFERENCE NO.	SHEET NO.
B-4700AK	TCP-1

**PLAN FOR PROPOSED
TRAFFIC CONTROL**

BERTIE COUNTY

LOCATION: BRIDGE NO. 8 , NC 11/NC 42 OVER
ROANOKE RIVER OVERFLOW

TYPE OF WORK: TRAFFIC CONTROL FOR BRIDGE DECK PRESERVATION

WBS 36727.3.35

TIP NO. B-4700AK

ROADWAY STANDARD DRAWINGS

THE FOLLOWING ROADWAY STANDARDS AS APPEAR IN "ROADWAY STANDARD DRAWINGS" - PROJECT SERVICES UNIT - N.C. DEPARTMENT OF TRANSPORTATION - RALEIGH, N.C., DATED JULY 2006 ARE APPLICABLE TO THIS PROJECT AND BY REFERENCE HEREBY ARE CONSIDERED A PART OF THESE PLANS:

STD. NO.	TITLE
1101.02	TEMPORARY LANE CLOSURES
1101.04	TEMPORARY SHOULDER CLOSURES
1101.11	TRAFFIC CONTROL DESIGN TABLES
1110.02	PORTABLE WORK ZONE SIGNS
1130.01	DRUMS
1150.01	FLAGGING DEVICES
1165.01	TRUCK MOUNTED IMPACT ATTENUATOR
1180.01	SKINNY DRUM
1205.01	PAVEMENT MARKINGS - LINE TYPES AND OFFSETS
1205.02	PAVEMENT MARKINGS - TWO-LANE, TWO-WAY ROADWAYS
1250.01	PAVEMENT MARKER SPACING
1251.01	PERMANENT RAISED PAVEMENT MARKERS

INDEX OF SHEETS

SHEET NO.	TITLE
TCP-1	LIST OF APPLICABLE ROADWAY STANDARD DRAWINGS, LEGEND, AND INDEX OF SHEETS
TCP-2	GENERAL NOTES
TCP-3	VICINITY MAP AND PHASING
TCP-4	DETAIL FOR TEMPORARY LANE CLOSURES USING FLAGGING OPERATIONS
TCP-5	ADVANCE WORK ZONE SIGNING

LEGEND

GENERAL

- DIRECTION OF TRAFFIC FLOW
- NORTH ARROW
- EXIST. PVMT.
- WORK AREA

TRAFFIC CONTROL DEVICES

- TYPE III BARRICADE
- CONE
- DRUM SKINNY DRUM
- FLASHING ARROW PANEL (TYPE C)
- PORTABLE SIGN
- STATIONARY OR PORTABLE SIGN
- CHANGEABLE MESSAGE SIGN
- TRUCK MOUNTED IMPACT ATTENUATOR (TMIA)
- FLAGGER

APPROVED:
DATE: 2/12/2010

PLAN PREPARED BY:

Stantec Consulting Services Inc.
801 Jones Franklin Road
Suite 300
Raleigh, NC 27606
Tel. (919) 851-6866
Fax. (919) 851-7024
www.stantec.com
License No. F-0672

BETSY L. WATSON, PE **TRAFFIC CONTROL ENGINEER**

KELLIE L. WIESKAMP, EI **TRANSPORTATION DESIGNER**

GENERAL NOTES

CHANGES MAY BE REQUIRED WHEN PHYSICAL DIMENSIONS IN THE DETAIL DRAWINGS, STANDARD DETAILS AND ROADWAY DETAILS ARE NOT ATTAINABLE TO MEET FIELD CONDITIONS, OR RESULT IN DUPLICATE, OR UNDESIRED OVERLAPPING OF DEVICES. MODIFICATION MAY INCLUDE: MOVING, SUPPLEMENTING, COVERING OR REMOVAL OF DEVICES, AS DIRECTED BY THE ENGINEER.

THE FOLLOWING GENERAL NOTES APPLY AT ALL TIMES FOR THE DURATION OF THE CONSTRUCTION PROJECT, EXCEPT WHEN OTHERWISE NOTED IN THE PLAN, OR DIRECTED BY THE ENGINEER.

LANE CLOSURE TIME RESTRICTIONS

A) DO NOT CLOSE OR NARROW TRAVEL LANES AS FOLLOWS:

ROAD NAME	DAY AND TIME RESTRICTIONS
NC 11/NC 42	6:00 A.M.-7:00 P.M. MONDAY THRU SUNDAY

B) DO NOT CLOSE OR NARROW TRAVEL LANES DURING HOLIDAYS AND SPECIAL EVENTS AS FOLLOWS:

ROAD NAME
NC 11/NC 42

HOLIDAY

- 1) FOR ANY UNEXPECTED OCCURRENCE THAT CREATES UNUSUALLY HIGH TRAFFIC VOLUMES, AS DIRECTED BY THE ENGINEER.
- 2) FOR NEW YEAR'S, BETWEEN THE HOURS OF 7:00 P.M. DECEMBER 31st TO 6:00 A.M. JANUARY 2nd. IF NEW YEAR'S DAY IS ON A FRIDAY, SATURDAY, SUNDAY, OR MONDAY THEN UNTIL 6:00 A.M. THE FOLLOWING TUESDAY.
- 3) FOR EASTER, BETWEEN THE HOURS OF 7:00 P.M. THURSDAY AND 6:00 A.M. MONDAY.
- 4) FOR MEMORIAL DAY, BETWEEN THE HOURS OF 7:00 P.M. FRIDAY TO 6:00 A.M. TUESDAY.
- 5) FOR INDEPENDENCE DAY, BETWEEN THE HOURS OF 7:00 P.M. THE DAY BEFORE INDEPENDENCE DAY AND 6:00 A.M. THE DAY AFTER INDEPENDENCE DAY. IF INDEPENDENCE DAY IS ON A FRIDAY, SATURDAY, SUNDAY OR MONDAY; THEN BETWEEN THE HOURS OF 7:00 P.M. THE THURSDAY BEFORE INDEPENDENCE DAY AND 6:00 A.M. THE TUESDAY AFTER INDEPENDENCE DAY.
- 6) FOR LABOR DAY, BETWEEN THE HOURS OF 7:00 P.M. FRIDAY AND 6:00 A.M. TUESDAY.
- 7) FOR THANKSGIVING DAY, BETWEEN THE HOURS OF 7:00 P.M. TUESDAY TO 6:00 A.M. MONDAY.
- 8) FOR CHRISTMAS, BETWEEN THE HOURS OF 7:00 P.M. THE FRIDAY BEFORE THE WEEK OF CHRISTMAS DAY AND 6:00 A.M. THE FOLLOWING TUESDAY AFTER THE WEEK OF CHRISTMAS.

LANE AND SHOULDER CLOSURE REQUIREMENTS

- C) REMOVE LANE CLOSURE DEVICES FROM THE LANE WHEN WORK IS NOT BEING PERFORMED BEHIND THE LANE CLOSURE OR WHEN A LANE CLOSURE IS NO LONGER NEEDED, OR AS DIRECTED BY THE ENGINEER.
- D) WHEN PERSONNEL AND/OR EQUIPMENT ARE WORKING WITHIN 15 FT OF AN OPEN TRAVEL LANE, CLOSE THE NEAREST OPEN SHOULDER USING ROADWAY STANDARD DRAWING NO. 1101.04 UNLESS THE WORK AREA IS PROTECTED BY BARRIER OR GUARDRAIL OR A LANE CLOSURE IS INSTALLED.
- E) WHEN PERSONNEL AND/OR EQUIPMENT ARE WORKING WITHIN A LANE OF TRAVEL OF AN UNDIVIDED OR DIVIDED FACILITY, CLOSE THE LANE ACCORDING TO THE TRAFFIC CONTROL PLANS, ROADWAY STANDARD DRAWINGS OR AS DIRECTED BY THE ENGINEER. CONDUCT THE WORK SO THAT ALL PERSONNEL AND/OR EQUIPMENT REMAIN WITHIN THE CLOSED TRAVEL LANE.
- F) DO NOT WORK SIMULTANEOUSLY WITHIN 15 FT ON BOTH SIDES OF AN OPEN TRAVELWAY RAMP OR LOOP WITHIN THE SAME LOCATION UNLESS PROTECTED WITH GUARDRAIL OR BARRIER.

TRAFFIC PATTERN ALTERATIONS

- G) NOTIFY THE ENGINEER TWENTY ONE (21) CALENDAR DAYS PRIOR TO ANY TRAFFIC PATTERN ALTERATION.

SIGNING

- H) INSTALL ADVANCE WORK ZONE WARNING SIGNS WHEN WORK IS WITHIN 40 FT. OF THE EDGE OF TRAVEL LANE AND NO MORE THAN THREE DAYS PRIOR TO THE BEGINNING OF CONSTRUCTION

- I) ENSURE ALL SIGNING IS IN PLACE PRIOR TO ALTERING ANY TRAFFIC PATTERN.

TRAFFIC CONTROL DEVICES

- J) SPACE CHANNELIZING DEVICES IN WORK AREAS NO GREATER IN FEET THAN TWICE THE POSTED SPEED LIMIT (MPH), EXCEPT 10 FT. ON-CENTER IN RADIUS, AND 3 FT. OFF THE EDGE OF AN OPEN TRAVELWAY WHEN LANE CLOSURES ARE NOT IN EFFECT. WHEN SKINNY DRUMS ARE ALLOWED REFER TO SECTION 1180 OF STANDARD SPECIFICATIONS FOR ROADS AND STRUCTURES AS SHOWN IN THE PLANS.



PAVEMENT MARKINGS AND MARKERS

- K) ON THE FINAL SURFACE OF NC 11/NC 42, INSTALL POLYUREA PAVEMENT MARKINGS ACCORDING TO RSD 1205.02 AND PERMANENT RAISED PAVEMENT MARKERS ACCORDING TO RSD 1250.01.
- L) AT THE END OF EACH NIGHT'S OPERATIONS, REPLACE ANY DAMAGED PAVEMENT MARKINGS ON NC 11/NC 42 WITH TEMPORARY PAINT MARKINGS. PLACE ONE APPLICATION OF PAINT FOR TEMPORARY MARKINGS UNLESS OTHERWISE DIRECTED BY THE ENGINEER.

MISCELLANEOUS

- M) ENSURE THE OVERSIZE/OVERWEIGHT PERMIT UNIT (919) 733-4740 HAS BEEN ADVISED OF THE ONGOING TRAFFIC OPERATIONS THROUGH THE DIVISION OFFICE.

TrafficControl\B-4700AK\Bentley\PLAN SHEETS\tcp.psh_02.dgn

 Stantec <small>Stantec Consulting Services Inc. 801 Jones Franklin Road Suite 300 Raleigh, NC 27606 Tel. (919) 851-6866 Fax. (919) 851-7024 www.stantec.com License No. F-0672</small>	SEAL	 <i>Gregory L. Watson</i> 2/12/10	GENERAL NOTES										
	SIGNATURE		DATE	SCALE: NONE DATE: FEB. 2010 DWG. BY: KLW DESIGN BY: BLW REVIEWED BY: BLW	<table border="1" style="width: 100%; border-collapse: collapse;"> <thead> <tr> <th colspan="2">REVISIONS</th> </tr> </thead> <tbody> <tr><td> </td><td> </td></tr> <tr><td> </td><td> </td></tr> <tr><td> </td><td> </td></tr> <tr><td> </td><td> </td></tr> </tbody> </table>	REVISIONS							
REVISIONS													

TRAFFIC CONTROL PHASING

STEP 1:

PERFORM BRIDGE DECK PRESERVATION OPERATIONS AS SHOWN IN THE CONTRACT AND CONSTRUCTION PLANS. PERFORM WORK IN ACCORDANCE WITH "NCDOT STANDARD SPECIFICATIONS FOR ROADS AND STRUCTURES-JULY 2006".

PERFORM WORK USING NIGHTLY FLAGGING OPERATIONS ACCORDING TO SHEET TCP-4 AND THE TIME RESTRICTIONS SHOWN ON SHEET TCP-2. DURING EACH WORK PERIOD, PERFORM ONLY THE AMOUNT OF DECK PRESERVATION THAT CAN BE COMPLETED IN THE GIVEN WORK PERIOD.

REFER TO STRUCTURE PLANS FOR THE EXACT PLACEMENT OF DRUMS FOR THE FLAGGING OPERATION. INSTALL APPROPRIATE SHIFT TAPERS IN ORDER TO PLACE TRAFFIC IN THE NARROWED LANE.

AT THE END OF EACH NIGHT'S OPERATIONS MOVE EQUIPMENT TO STAGING AREA AT LEAST 40 FEET AWAY FROM ANY TRAVEL LANES AS APPROVED BY THE ENGINEER AND REMOVE LANE CLOSURES.

STEP 2:

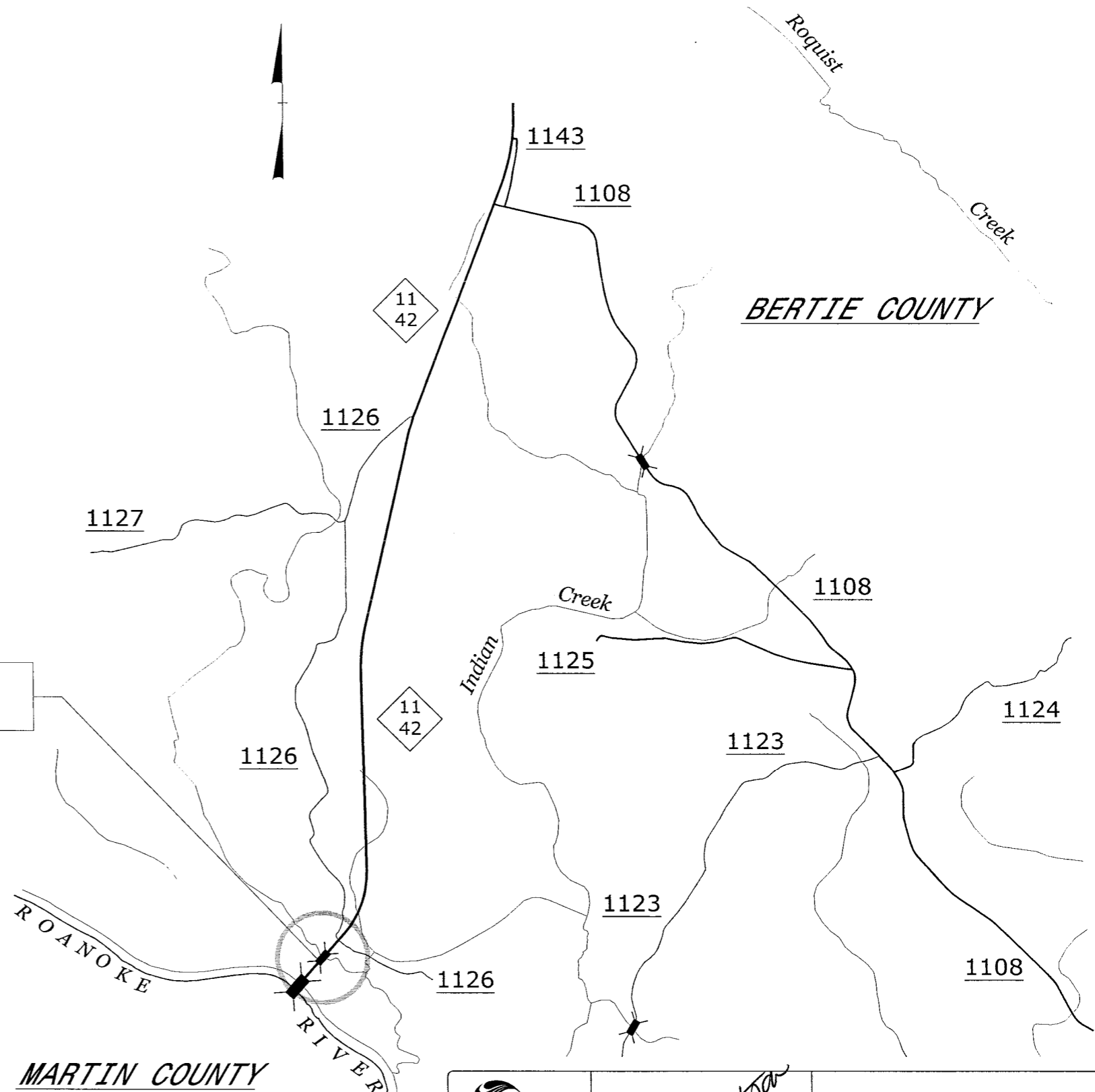
UPON COMPLETION OF DECK PRESERVATION, PLACE FINAL PAVEMENT MARKINGS AND MARKERS ON BRIDGE.

PERFORM WORK USING NIGHTLY FLAGGING OPERATIONS ACCORDING TO SHEET TCP-4 AND THE TIME RESTRICTIONS SHOWN ON SHEET TCP-2.

STEP 3:

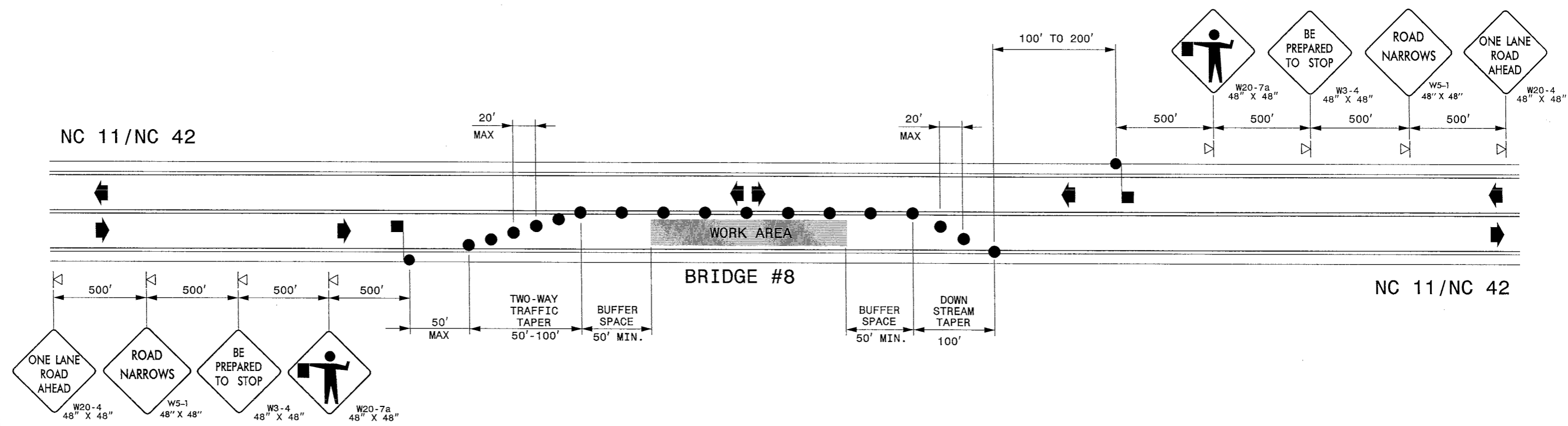
UPON COMPLETION OF THE PROJECT, REMOVE ALL TRAFFIC CONTROL DEVICES.

BRIDGE 8
NC 11/NC 42 OVER
ROANOKE RIVER OVERFLOW



2/18/2010 TrafficControl\B-4700AK Bertie 8\PLAN\SHEETS\tcp.psh_03.dgn

<p>Stantec Stantec Consulting Services Inc. 801 Jones Franklin Road Suite 300 Raleigh, NC 27606 Tel. (919) 851-6866 Fax. (919) 851-7024 www.stantec.com License No. F-0572</p>	<p>SEAL</p> <p><i>Gregory L. Watson</i> 2/18/10</p>	<p>BERTIE COUNTY DECK PRESERVATION VICINITY MAP TRAFFIC CONTROL PHASING</p>									
	<p>SCALE: NONE DATE: FEB. 2010 DWG. BY: KLW DESIGN BY: BLW REVIEWED BY: BLW</p>		<table border="1"> <thead> <tr> <th colspan="2">REVISIONS</th> </tr> </thead> <tbody> <tr> <td> </td> <td> </td> </tr> <tr> <td> </td> <td> </td> </tr> <tr> <td> </td> <td> </td> </tr> </tbody> </table>		REVISIONS						
REVISIONS											



GENERAL NOTES FOR FLAGGER OPERATIONS

- 1- INSTALL LANE CLOSURES WITH THE TRAFFIC FLOW, BEGINNING WITH DEVICES ON THE UPSTREAM SIDE OF TRAFFIC.
- 2- REMOVE LANE CLOSURES AGAINST THE TRAFFIC FLOW, BEGINNING WITH DEVICES ON THE DOWNSTREAM SIDE OF TRAFFIC.
- 3- PLACE DRUMS THRU THE WORK AREA AT THE MAXIMUM SPACING EQUAL IN FEET TO 2 TIMES THE POSTED SPEED LIMIT.
- 4- EXTEND LANE CLOSURES AT THE BUFFER SPACE SUCH THAT STOPPING SIGHT DISTANCE IS PROVIDED TO THE FLAGGER. (REFER TO STD. 1101.11 SHEET 2)
- 5- DO NOT STOP TRAFFIC IN ANY ONE DIRECTION FOR MORE THAN 5 MINUTES AT A TIME.
- 6- USE FLAGGERS TO CONTROL TRAFFIC AT INTERSECTIONS AFFECTED BY THE LANE CLOSURE. SUPPLEMENT FLAGGERS LOCATED AT INTERSECTIONS WITH FLAGGER AHEAD SIGNS (W20-7a) PLACED APPROXIMATELY 250 FT. IN ADVANCE OF THE FLAGGER WHERE INTERSECTIONS ARE SIGNALIZED AND PLACE SIGNALS IN THE FLASH MODE.
- 7- FLAGGERS SHALL NOT STAND IN THE ROADWAY.

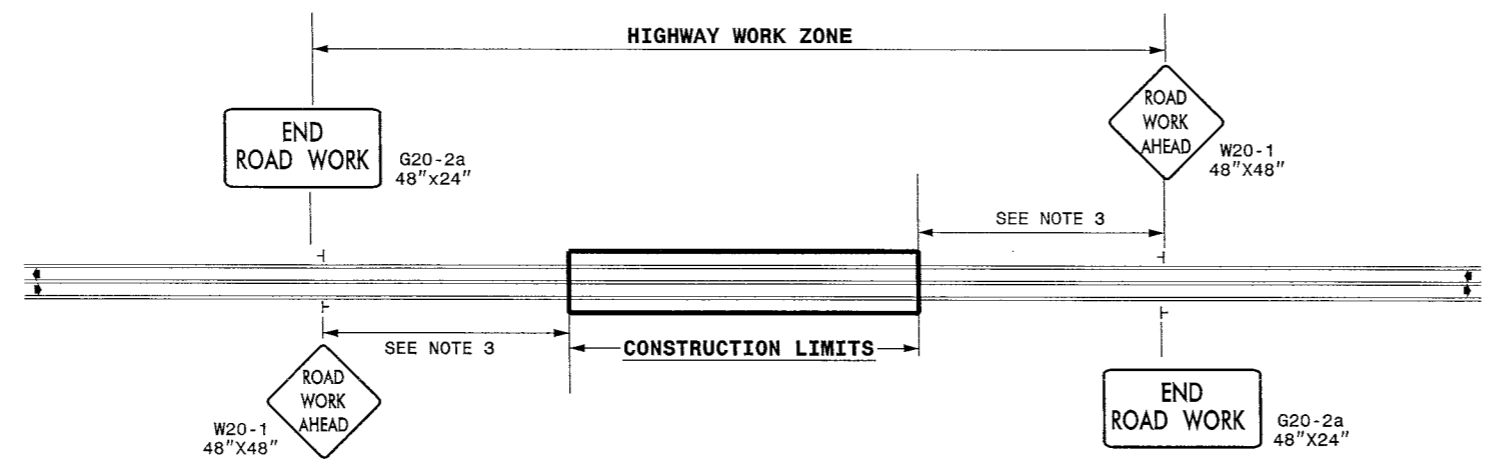
LEGEND

- DRUM
- ▽ PORTABLE SIGN
- FLAGGER
- ← DIRECTION OF TRAFFIC FLOW

T:\ref\nc\comp\2\18\2010\00AK Bertie 8\PLAN.SHEETS\tcp.psh.04.dgn

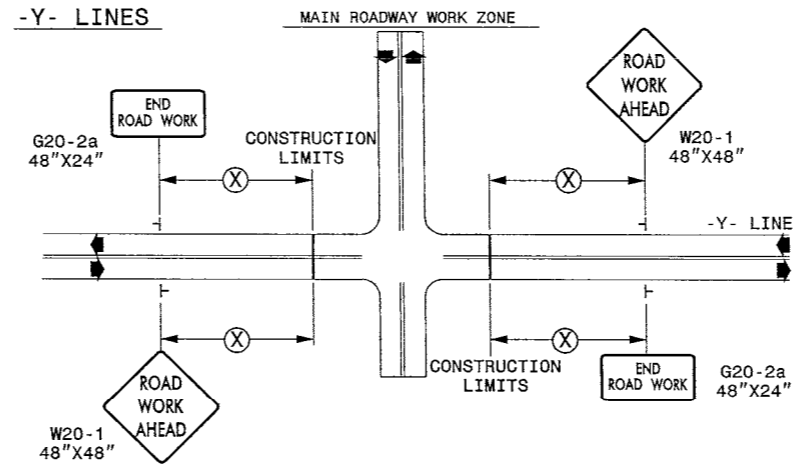
<p>Stantec Stantec Consulting Services Inc. 801 Jones Franklin Road Suite 300 Raleigh, NC 27606 Tel. (919) 851-6886 Fax. (919) 851-7024 www.stantec.com License No. F-0572</p>	<p>SEAL</p>	<p>TEMPORARY LANE CLOSURES FLAGGING OPERATIONS</p>							
	<p>SIGNATURE</p>	<p>DATE</p> <p>2/12/10</p>	<p>SCALE: NONE</p> <p>DATE: FEB. 2010</p> <p>DWG. BY: K LW</p> <p>DESIGN BY: BLW</p> <p>REVIEWED BY: BLW</p>	<p>REVISIONS</p> <table border="1"> <tr><td> </td><td> </td></tr> <tr><td> </td><td> </td></tr> <tr><td> </td><td> </td></tr> </table>					

TWO-WAY UNDIVIDED ** (L-LINES)



STATE OF NORTH CAROLINA
DEPT. OF TRANSPORTATION
DIVISION OF HIGHWAYS
RALEIGH, N.C.

ROADWAYS INTERSECTING ALONG 2 WAY UNDIVIDED WORK ZONE (Y-LINES)



POSTED SPEED LIMIT (M.P.H.)	RECOMMENDED MINIMUM SIGN SPACING
≤ 50	500'
≥ 55	1000'

**DETAIL DRAWING FOR
TWO-WAY UNDIVIDED
WORK ZONE WARNING SIGNS**

GENERAL NOTES

- 1- USE FLUORESCENT ORANGE SHEETING (TYPE VII OR HIGHER) ON ALL ADVANCED WORK ZONE SIGNS.
- 2- DO NOT INSTALL ADVANCE WARNING SIGNS MORE THAN 3 DAYS PRIOR TO BEGINNING OF WORK.
- 3- UNLESS OTHERWISE DIRECTED BY THE ENGINEER, MOUNT STATIONARY "ROAD WORK AHEAD" SIGNS W20-1 AT LEAST 500' IN ADVANCE OF "ONE LANE ROAD AHEAD" SIGNS W20-4.
- 4- ALL SIGN SPACING DIMENSIONS ARE APPROXIMATE; FIELD ADJUST AS NECESSARY OR AS DIRECTED.
- 5- USE 3LB STEEL U-CHANNEL POST OR 4" X 4" WOOD POST FOR ALL WORK ZONE SIGNS. 3LB STEEL U-CHANNEL POSTS MUST MEET THE REQUIREMENTS OF STANDARD SPECIFICATION SECTION 1094-1(B), MAY BE GALVANIZED STEEL, OR MAY BE PAINTED GREEN BY THE POST MANUFACTURER. SQUARE STEEL TUBING POSTS HAVING EQUIVALENT STRENGTH OF THE 3 LB STEEL U-CHANNEL POST ARE ALSO ACCEPTABLE FOR USE. ERECT SIGNS PER ROADWAY STANDARD DRAWING 1110.01. PAYMENT FOR WOOD POSTS, 3LB STEEL U-CHANNEL AND SQUARE STEEL TUBING POSTS WITH SIGNS WILL BE MADE ACCORDING TO STANDARD SPECIFICATION "WORK ZONE SIGNS" SECTION 1110.
- 6- WHEN NECESSARY, USE SPLICING IN ACCORDANCE WITH ROADWAY STANDARD DRAWING NO. 1110.01. REMOVE ENTIRE POST WHEN REMOVING SIGNS WITH SPLICED POSTS.
- 7- DO NOT BACK BRACE SIGN SUPPORTS.

LEGEND

┆ STATIONARY SIGN

◀ DIRECTION OF TRAFFIC FLOW

SHEET 1 OF 1

APPROVED: _____	DATE: _____	DETAIL DRAWING FOR TWO-WAY UNDIVIDED AND URBAN FREEWAYS ADVANCED WORK ZONE WARNING SIGNS	
SCALE: NONE	REVISIONS		
DATE: _____			
DWG. BY: _____			
DESIGN BY: _____			
REVIEWED BY: _____			

2/12/2010
 C:\TrafficControl\B-4700AK Bertie 8\B-4700AK_tcp_ADSIGNING.dgn
 kmbskmp